



CATHODIC PROTECTION SURVEY – STABCON *Digital*

Single Cell Stab & Continuous CP Monitoring System (STABCON) *Digital*

The STABCON *Digital* system has been developed by ISES to provide our Client's with a simple, robust, cost effective, and operator friendly contact & continuous CP monitoring package.

STABCON *Digital* is ideal for use during offshore structural cathodic protection surveys when using fibre optic ROV communications protocols.

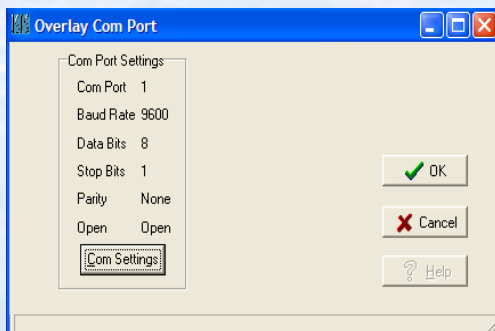
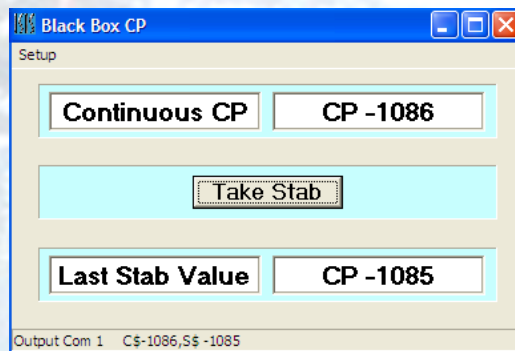
The system also utilises the towed remote CTC (Cell to Cell) technique which also allows a continuous potential profile to be obtained without the need for a direct connection to the structure being surveyed.

The single Ag/AgCl contact probe is designed to be mounted on an ROV and is a robust and reliable unit with a sharp stainless steel stabbing contact tip.

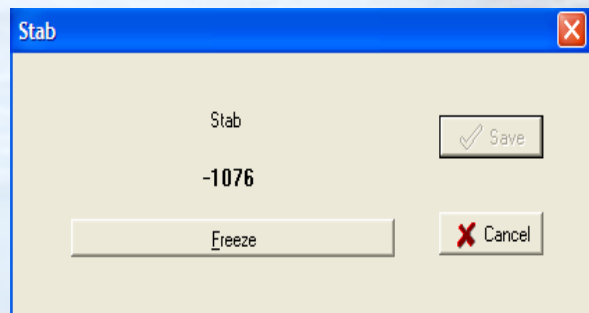
When used in conjunction with an Ag/AgCl remote half cell, and the STABCON software package, continuous potential profiles can also be displayed & recorded.

Analogue inputs from the probe are digitised via a subsea digitiser using RS232 protocols utilising the ROV multiplexor with output to the PC via an RS232 connector.

A "Pop-up" menu allows user to take contact measurements and view contact & continuous CP data.



Communication protocols to the overlay can be set to a variety of configurations using a simple drop down menu.



Contact Stab menu allows the user to "freeze" the reading, without loss while trying to obtain a better contact



CATHODIC PROTECTION SURVEY – STABCON *Digital*

System Specifications – STABCON *Digital*

SUBSEA DIGITISER

Pressure resistant electronics housing for sub sea digitisation of analogue signals.

- Multiple data transmission protocols.
- Rated to 3000m MSW.
- 16 Bit Analogue Digital converter.
- Output ranges 1/10 of a second to 1 data set per second
- Sensitivity up to 0.05 mV.
- Five Pin Sub con c/w whip
- Length 24 cm
- Diameter 10 cm
- Weight in Air 4 kg
- Power Requirements 24 V DC
- Communication Protocols RS 485, RS 232.



CP CONTACT PROBE

Robust contact CP & Continuous Ag/AgCl Cell probe.

Comprises of stab tip and one Silver/Silver Chloride half cell to monitor cathodic protection potential complete with connection to the subsea digitiser.

- Length 50cm
- Diameter 7cm
- Weight in Air 0.5 Kg



Remote Half Cell

Ag/AgCl supplied with 20m of cable and digitiser connector.

Computer Data Interface

3rd Party Supplied; requires minimum Windows XP compatible PC with two x RS232 connectors or 2 x USB ports for optional supplied USB/RS232 converters. Alternatively ISES can supply laptop pre-loaded with the STABCON software.

Spare stab tips & remote half cell supplied as standard

Optional Calomel reference cells & Zinc reference available upon request

EUROPE

ISES Technical Services Limited

First Floor Block 7
The Altec Centre
Minto Drive
Altens Industrial Estate
Aberdeen AB12 3LW
Tel: +44 (0) 1224 874440
Fax: +44 (0) 1224 8732211

ASIA PACIFIC

ISES Technical Services Pte Ltd

Trinity Offshore Building,
No 4 Loyang Drive, Unit No. 01-00,
Loyang Industrial Estate,
Singapore 508979
Tel: +65 6546 7228
Fax: + 65 6542 7077

MALAYSIA

Inspection Survey & Integrity Services Sdn Bhd

CT-10-07, Subang Square Corporate Tower,
Jalan SS15/4G,
Subang Jaya,
Selangor,
Malaysia. 47500
Tel: +6 03 5635 9500 / 9850 / 9750
Fax: +6 03 5635 9655